



Vertical Stack Water Source Heat Pumps

Model UVHPL: Sizes 02-12 / 0.5-3.0 Tons

Leading Manufacturers of High-Rise
Residential HVAC Equipment

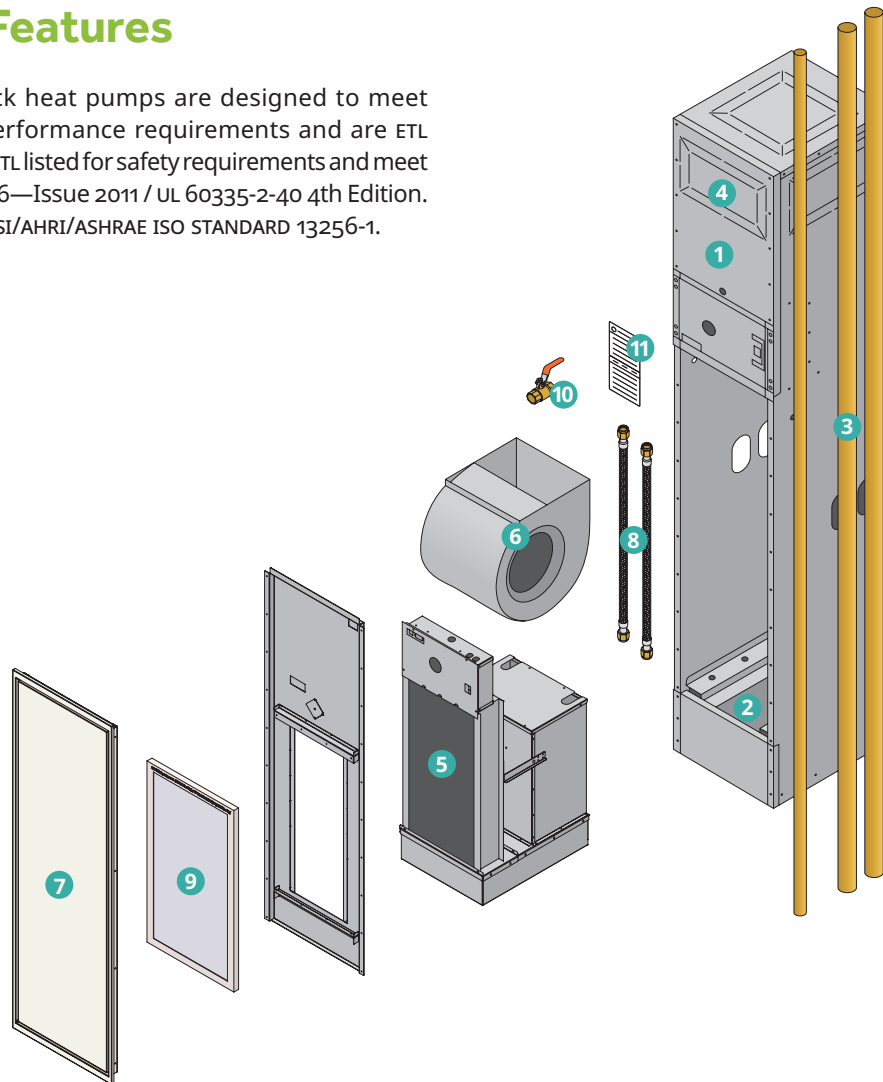


APARTMENTS | CONDOS | ASSISTED LIVING | HOTELS | RESORTS

Benefits Overview

Standard Features

Unilux vertical stack heat pumps are designed to meet industry-leading performance requirements and are ETL tested. The units are ETL listed for safety requirements and meet UL 1995 / CSA22.2 #236—Issue 2011 / UL 60335-2-40 4th Edition. They conform to ANSI/AHRI/ASHRAE ISO STANDARD 13256-1.



1. Cabinet

Manufactured with satin-finished steel, the cabinet offers supply openings on the front, back, left, right or top. It is fully lined with fiberglass insulation reinforced by a thermosetting resin. It is coated on the air stream side with an acrylic facing without the use of flammable adhesives. Insulation inside the unit has a flame-spread rating no more than 25 and a smoke-developed rating no more than 50.

2. Stainless Steel Drain Pan and Overflow Sensor

Stainless-steel drain pan with neoprene insulation. A pre-formed rubber drain hose will connect the drain pan with the condensate riser to form P-trap and will be easily accessible for cleaning. The pan includes an overflow sensor to detect rising water levels and turn off the unit to prevent flooding.

3. Risers

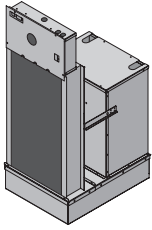
Supply and return risers are type 'L' copper and condensate risers are type 'bwv'. All have 75mm (3") deep expanded ends to facilitate field installation. Condensate risers are insulated with 1" fiberglass covered with a vapour barrier jacket, which complies with ASTM 84 for flame-spread and smoke-developed ratings. The insulation is continuous over the riser length within the height of the cabinet.

4. Supply Air Grilles & Registers

Double-deflection supply air grilles have adjustable vertical and horizontal louvers. They are constructed with light-gauge, powder-coated metal.

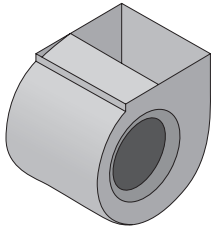
Benefits Overview

Standard Features (Continued)



5. Refrigeration Chassis

A removable chassis with compressor isolation reduces vibration and provides easy and convenient service access. The chassis is complete with a rotary or scroll compressor, coax heat exchanger, TX valve, reversing valve, balancing valve, 2-way valve and motorized actuator — all housed within a sound-dampening cabinet. Complete with a DX coil and R-454B refrigeration circuit.



6. Fan & Motor Assembly

A thermally-protected, multi-speed ECM motor is resiliently mounted to a centrifugal fan which has a galvanized steel forward-curved DWDI wheel in a galvanized housing.



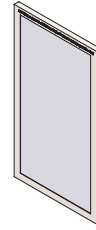
7. Access Panel

Steel construction with a durable baked-enamel powder coat finish, featuring a hinged door for easy filter exchange.



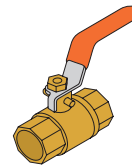
8. Water Hoses

Flexible supply and return hoses for easy removal during maintenance and replacement.



9. Filter

One 1" MERV 8 filter and one disposable filter are included with the return air intake opening.



10. Ball Valves

Manual shut-off valves.

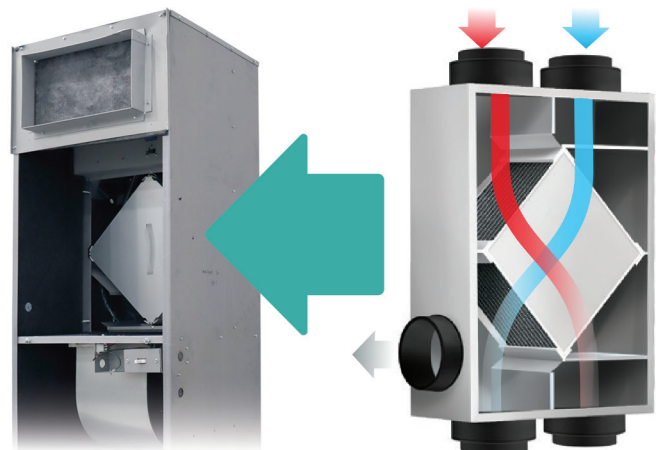


11. Unit Tagging

Units can be tagged with specific room numbers, riser numbers and other unique requirements.

ERV Upgrade

Unilux HVAC has developed a patented energy recovery ventilation system (ERV) that can be integrated with our full line of vertical stack heat pumps. Our integrated ERV solutions include multiple dampers and temperature sensors to ensure cores do not freeze when outside temperatures drop below freezing, without the need for an electric heater.



Performance Schedule

Model Number	Nominal Tons	Air Flow Rate	Fluid Flow Rate (GPM)	Cooling 86°F / 30°C		Heating 68°F / 20°C	
				Full Load WLHP Cooling Capacity (BTUH)	EER (BTUH/Watt)	Full Load Heating Capacity (BTUH)	COP
UVHP02L	0.5	315	1.75	6,900	13.65	8,600	5.15
UVHP03L	0.75	355	2.50	9,000	15.25	11,625	5.36
UVHP04L	1.00	495	3.00	12,000	14.90	14,850	5.25
UVHP05L	1.25	550	3.75	13,800	14.10	16,800	4.91
UVHP06L	1.50	625	5.00	16,850	13.65	21,700	4.52
UVHP08L	2.00	802	6.00	23,500	13.65	31,000	4.72
UVHP10L	2.50	980	7.50	29,000	13.65	32,000	4.52
UVHP12L	3.00	1,150	8.50	34,500	13.65	39,800	4.52

Our state-of-the-art designs are demanded by today's best developers, engineers and owners. Contact us to learn why Unilux HVAC is the preferred choice of professionals throughout North America for vertical stack HVAC solutions.

📞 1 (905) 851-3981

✉ info@uniluxhvac.com

📍 7930 Huntington Road Unit A
Woodbridge, ON L4H 4M8

