



Vertical Stack Water Source Heat Pumps

Model UVHPXXT: Sizes 02-12 / 0.5-3.0 Tons

Leading Manufacturers of High-Rise
Residential HVAC Equipment

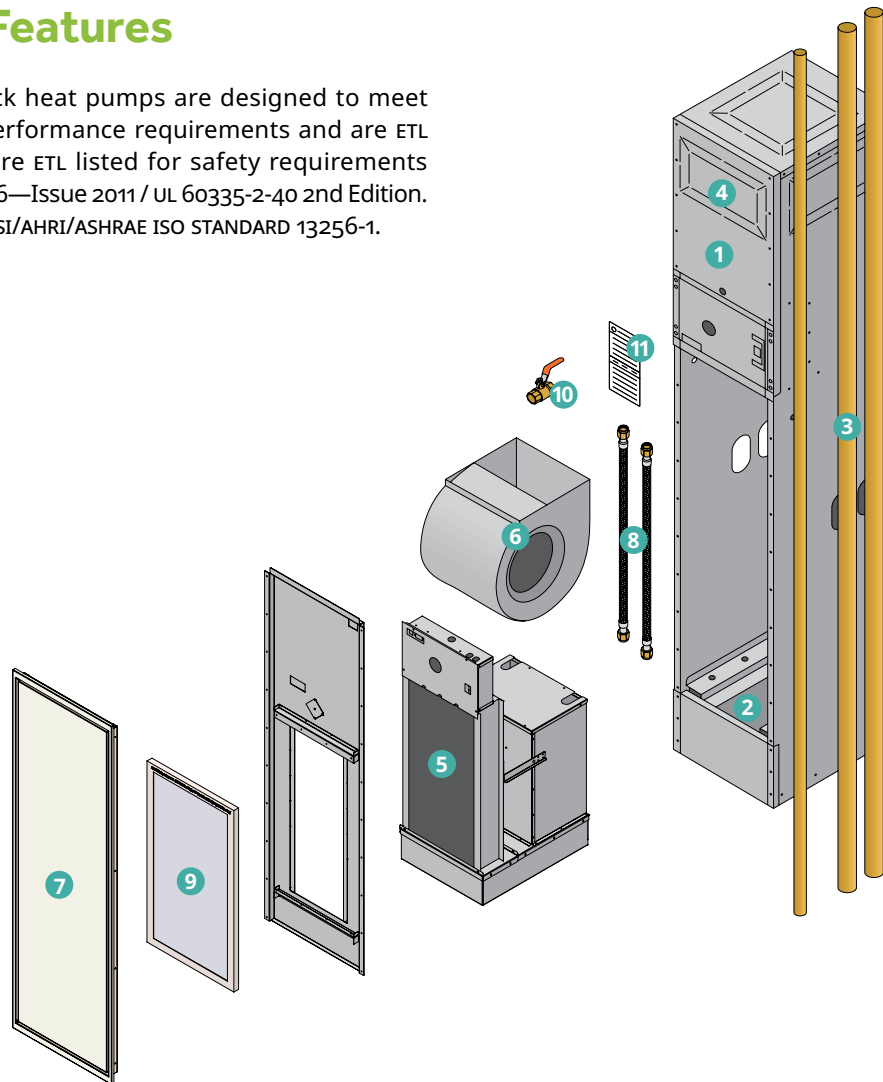


APARTMENTS | CONDOS | ASSISTED LIVING | HOTELS | RESORTS

Benefits Overview

Standard Features

Unilux vertical stack heat pumps are designed to meet industry-leading performance requirements and are ETL tested. The units are ETL listed for safety requirements UL 1995 / CSA22.2 #236—Issue 2011 / UL 60335-2-40 2nd Edition. They conform to ANSI/AHRI/ASHRAE ISO STANDARD 13256-1.



1. Cabinet

Manufactured with 20-gauge satin steel. Configured with front, back, left, right or top supply air openings. Cabinet is fully insulated with 1" fibreglass with a thermosetting resin. It is coated on the air stream side with an acrylic facing without the use of flammable adhesives. Insulation inside the unit has a flame-spread rating no more than 25 and a smoke-developed rating no more than 50.

2. Stainless Steel Drain Pan and Overflow Sensor

Stainless-steel drain pan with neoprene insulation. A flex hose will connect the drain pan with the condensate riser to form P-trap and will be easily accessible for cleaning. The pan includes an overflow sensor to detect rising water levels and turn off the unit to prevent flooding.

3. Risers

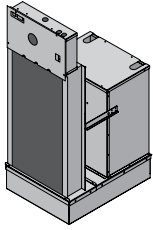
Supply and return risers are type 'L' copper and condensate risers are type 'dww'. All have 75mm (3") deep expanded ends to facilitate field installation. Supply and return risers are insulated with 1" fibreglass covered with a vapour barrier jacket, which complies with ASTM 84 for flame-spread and smoke-developed ratings. The insulation is continuous over the riser length within the height of the cabinet.

4. Supply Air Grilles & Registers

Double-deflection supply air grilles have adjustable vertical and horizontal louvers. They are constructed with light-gauge, powder-coated metal.

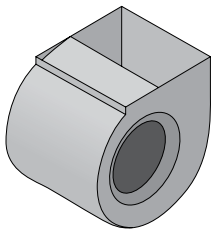
Benefits Overview

Standard Features (Continued)



5. Refrigeration Chassis

A completely removable, floating-design chassis minimizes vibration and allows easy access for service. The chassis is complete with a rotary or scroll compressor enclosed in a sound dampening and isolated box, coax heat exchanger, TX valve, 4-way reversing valve, balancing valve, 2-way valve and motorized actuator, DX coil and R410a refrigerant piping.



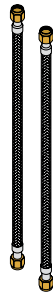
6. Fan & Motor Assembly

A thermally-protected, multi-speed ECM motor is resiliently mounted to a centrifugal fan which has a galvanized steel forward-curved DWDI wheel in a galvanized housing.



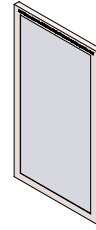
7. Access Panel

20-gauge steel construction finished in a durable baked enamel powder coat. Includes a hinged door for easy filter exchange.



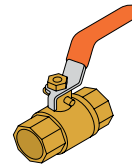
8. Water Hoses

Flexible supply and return lines isolate compressor noise from the building's pipe system.



9. Filter

One 1" MERV 8 filter and one disposable filter are included with the return air intake opening.



10. Ball Valves

Manual shut-off valves.

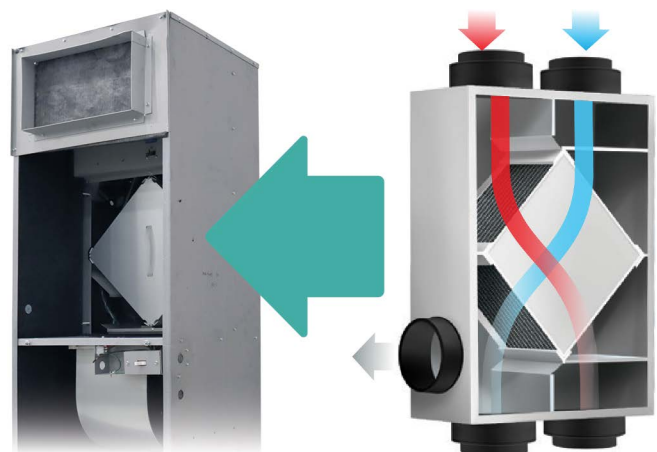


11. Unit Tagging

Units can be tagged with specific room numbers, riser numbers and other unique requirements.

HRV or ERV Upgrade

Unilux HVAC has developed a patented heat or energy recovery ventilation system (HRV or ERV) that can be integrated with our full line of vertical heat pumps. HRV products have been used for years to introduce fresh air into homes and minimize energy loss by utilizing a heat transfer core that cools and heats more rapidly than standard systems. ERV cores go a step further and assist in transferring moisture between the exhaust and fresh air, increasing comfort inside the suite. HRV/ERV cores are ideal for energy savings in climates with drastic high and low temperatures. Our integrated HRV/ERV solutions include multiple dampers and temperature sensors to ensure cores do not freeze when outside temperatures drop below freezing.



Performance Schedule

Model Number	Nominal Tons	Air Flow Rate	Fluid Flow Rate (GPM)	Cooling 86°F / 30°C		Heating 68°F / 20°C	
				Full Load WLHP Cooling Capacity (BTUH)	EER (BTUH/Watt)	Full Load Heating Capacity (BTUH)	COP
UVHP02T	0.50	260	1.75	7,100	14.35	8,300	4.40
UVHP03T	0.75	360	2.5	9,000	14.70	12,000	4.90
UVHP04T	1.00	450	3	11,800	14.57	15,000	4.62
UVHP05T	1.25	540	3.75	15,000	15.00	17,300	4.63
UVHP06T	1.50	650	5	18,500	14.35	21,700	4.52
UVHP08T	2.00	830	6	25,000	13.65	33,500	4.72
UVHP10T	2.50	1,060	7.5	30,706	14.00	35,000	4.45
UVHP12T	3.00	1,210	8.5	34,100	13.65	41,000	4.52

Our state-of-the-art designs are demanded by today's best developers, engineers and owners. Contact us to learn why Unilux HVAC is the preferred choice of professionals throughout North America for vertical stack HVAC solutions.

☎ 1 (905) 851-3981

✉ info@uniluxhvac.com

📍 7930 Huntington Road Unit A
Woodbridge, ON L4H 4M8



UNILUX
HVAC INDUSTRIES