

Vertical Stack Water Source Heat Pumps

Model UVHP: Sizes 02-12 / 0.5-3.0 Tons



Leading Manufacturer of High-Rise
Residential HVAC Equipment

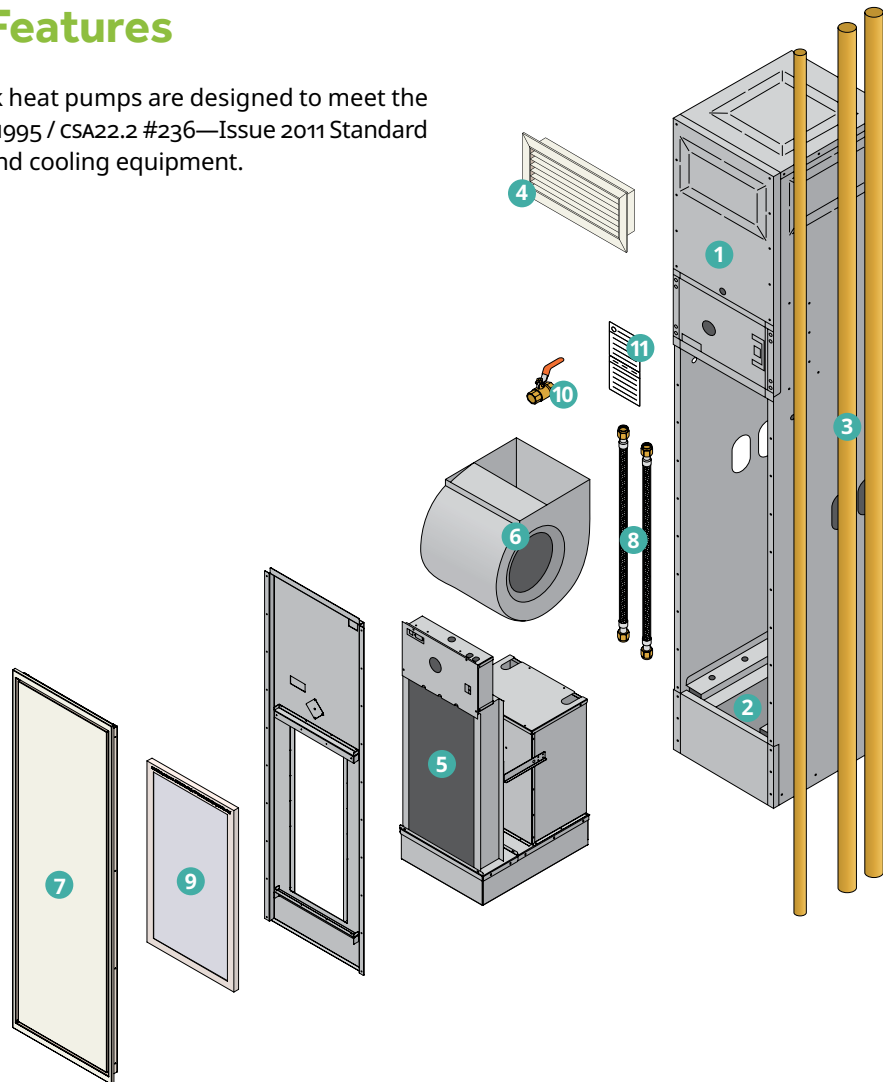


APARTMENTS | CONDOS | ASSISTED LIVING | HOTELS | RESORTS

Benefits Overview

Standard Features

Unilux vertical stack heat pumps are designed to meet the requirements of UL 1995 / CSA22.2 #236—Issue 2011 Standard for safety heating and cooling equipment.



1. Cabinet

Manufactured with 20-gauge satin steel. Configured with front, back, left, right or top supply air openings. Cabinet is fully insulated with 1" fibreglass with a thermosetting resin. It is coated on the air stream side with an acrylic facing without the use of flammable adhesives. Insulation inside the unit has a flame-spread rating no more than 25 and a smoke-developed rating no more than 50.

2. Stainless Steel Drain Pan and Overflow Sensor

Stainless-steel drain pan with neoprene insulation. A flex hose will connect the drain pan with the condensate riser to form P-trap and will be easily accessible for cleaning. The pan includes an overflow sensor to detect rising water levels and turn off the unit to prevent flooding.

3. Risers

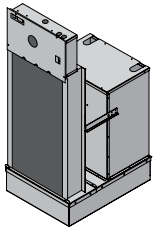
Supply and return risers are type 'L' copper and condensate risers are type 'dww'. All have 75mm (3") deep expanded ends to facilitate field installation. Supply and return risers are insulated with 1" fibreglass covered with a vapour barrier jacket, which complies with ASTM 84 for flame-spread and smoke-developed ratings. The insulation is continuous over the riser length within the height of the cabinet.

4. Supply Air Grilles & Registers

Double-deflection supply air grilles have adjustable vertical and horizontal louvers. They are constructed with light-gauge, powder-coated metal.

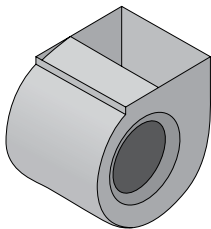
Benefits Overview

Standard Features (Continued)



5. Refrigeration Chassis

A completely removable, floating-design chassis minimizes vibration and allows easy access for service. The chassis is complete with a rotary or scroll compressor enclosed in a sound dampening and isolated box, coax heat exchanger, TX valve, 4-way reversing valve, balancing valve, 2-way valve and motorized actuator, DX coil and R410a refrigerant piping.



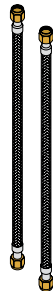
6. Fan & Motor Assembly

A thermally-protected, multi-speed ECM motor is resiliently mounted to a centrifugal fan which has a galvanized steel forward-curved DWDI wheel in a galvanized housing.



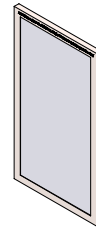
7. Access Panel

20-gauge steel construction finished in a durable baked enamel powder coat. Includes a hinged door for easy filter exchange.



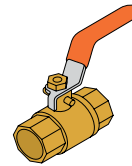
8. Water Hoses

Flexible supply and return lines isolate compressor noise from the building's pipe system.



9. Filter

One 1" MERV 8 filter and one disposable filter are included with the return air intake opening.



10. Ball Valves

Manual shut-off valves.

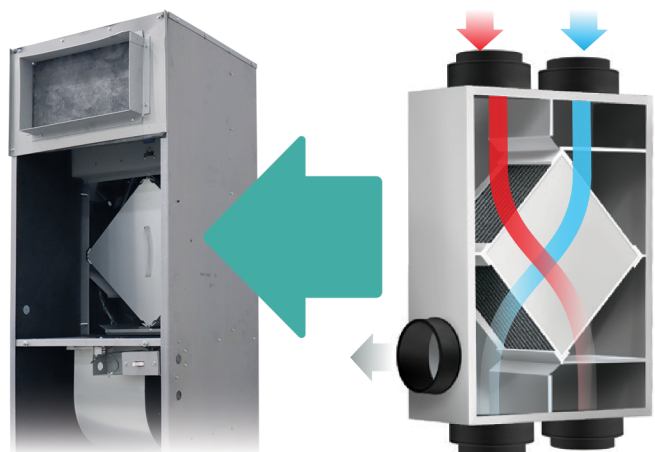


11. Unit Tagging

Units can be tagged with specific room numbers, riser numbers and other unique requirements.

ERV Upgrade

Unilux HVAC has developed a patented energy recovery ventilation system (ERV) that can be integrated with our full line of vertical stack fan coils. Our ERV cores further enhance comfort by transferring moisture between exhaust and fresh air, providing cost-effective moisture control. Our integrated ERV solutions include multiple dampers and temperature sensors to ensure cores do not freeze when outside temperatures drop below freezing, without the need for an electric heater.



Performance Schedule

General Data						
Model	Tonnes	CFM	ESP	GPM	Fluid	WPD
UVHP-02	0.50	250	0.10	1.75	Water	4.84
UVHP-03	0.75	340	0.10	2.50	Water	11.33
UVHP-04	1.00	450	0.10	3.00	Water	11.80
UVHP-05	1.25	540	0.10	3.75	Water	14.73
UVHP-06	1.50	650	0.10	5.00	Water	13.66
UVHP-08	2.00	810	0.15	5.50	Water	10.72
UVHP-10	2.50	1,060	0.15	7.50	Water	13.45
UVHP-12	3.00	1,200	0.15	8.30	Water	14.74

Electrical Data (with ECM)						
Model	Voltage/Phase/Hz	Compr. RLA	Compr. LRA	Blower FLA	MCZ	Circuit Breaker
UVHP-02	208-230/1/60	3.0	15.0	2.3	6.1 A	15 A
UVHP-03	208-230/1/60	3.7	22.0	2.3	6.9 A	15 A
UVHP-04	208-230/1/60	4.7	26.0	2.3	8.2 A	15 A
UVHP-05	208-230/1/60	5.5	26.0	2.3	9.2 A	15 A
UVHP-06	208-230/1/60	7.4	33.0	2.3	11.6 A	15 A
UVHP-08	208-230/1/60	10.9	61.6	2.8	16.4 A	25 A
UVHP-10	208-230/1/60	11.3	68.0	4.3	18.4 A	30 A
UVHP-12	208-230/1/60	15.4	83.9	4.3	23.6 A	35 A

Cooling Data									
Model	EAT-db	EAT-wb	Capacity Total	Capacity Sensible	WATT	EER	THR	EWT	LWT
UVHP-02	80.6°F / 27°C	66.25°F / 19.03°C	7,269	5,506	482	15.08	8,913	86°F / 30°C	96.19°F / 35.66°C
UVHP-03	80.6°F / 27°C	66.25°F / 19.03°C	9,321	7,061	617	15.10	11,425	86°F / 30°C	95.14°F / 35.08°C
UVHP-04	80.6°F / 27°C	66.25°F / 19.03°C	12,676	9,525	826	15.34	15,496	86°F / 30°C	96.33°F / 35.74°C
UVHP-05	80.6°F / 27°C	66.25°F / 19.03°C	15,435	11,787	1,003	15.31	18,870	86°F / 30°C	95.43°F / 34.24°C
UVHP-06	80.6°F / 27°C	66.25°F / 19.03°C	19,061	14,608	1,262	15.10	23,368	86°F / 30°C	95.35°F / 35.19°C
UVHP-08	80.6°F / 27°C	66.25°F / 19.03°C	25,638	19,334	1,706	15.03	31,458	86°F / 30°C	97.44°F / 36.36°C
UVHP-10	80.6°F / 27°C	66.25°F / 19.03°C	30,706	23,175	2,034	15.10	37,645	86°F / 30°C	96.04°F / 35.58°C
UVHP-12	80.6°F / 27°C	66.25°F / 19.03°C	34,100	25,946	2,495	13.54	42,741	86°F / 30°C	95.50°F / 35.28°C

Heating Data								
Model	EAT-db	EAT-wb	Capacity Total	WATT	COP	THA	EWT	LWT
UVHP-02	68°F / 20°C	59°F / 15°C	7,415	497	4.40	5,718	68.3°F / 20.2°C	61.8°F / 16.6°C
UVHP-03	68°F / 20°C	59°F / 15°C	11,868	681	5.10	9,543	68.3°F / 20.2°C	60.7°F / 15.9°C
UVHP-04	68°F / 20°C	59°F / 15°C	15,738	931	4.86	12,259	68.3°F / 20.2°C	60.1°F / 15.6°C
UVHP-05	68°F / 20°C	59°F / 15°C	17,424	1,050	4.87	13,933	68.3°F / 20.2°C	61.3°F / 16.3°C
UVHP-06	68°F / 20°C	59°F / 15°C	22,866	1,408	4.76	18,062	68.3°F / 20.2°C	61.1°F / 16.2°C
UVHP-08	68°F / 20°C	59°F / 15°C	28,779	1,787	4.72	22,681	68.3°F / 20.2°C	60.1°F / 15.6°C
UVHP-10	68°F / 20°C	59°F / 15°C	32,756	2,025	4.74	25,845	68.3°F / 20.2°C	61.4°F / 16.3°C
UVHP-12	68°F / 20°C	59°F / 15°C	41,000	2,681	4.49	32,084	68.3°F / 20.2°C	61.2°F / 16.2°C

Our state-of-the-art designs are demanded by today's best developers, engineers and owners. Contact us to learn why Unilux HVAC is the preferred choice of professionals throughout North America for vertical stack HVAC solutions.

📞 1 (905) 851-3981

✉️ info@uniluxhvac.com

📍 7930 Huntington Road Unit A
Woodbridge, ON L4H 4M8



UNILUX
HVAC INDUSTRIES